

How to open your sectional or tilt garage door manually.

Commander Essential | **Commander Elite** | **Commander Extreme**



To prevent possible SERIOUS INJURY or DEATH from a falling garage door:

- Disable ALL locks and remove any ropes before operating the manual release.
- If possible, use the manual release to disengage the door ONLY when the garage door is CLOSED. Weak or broken springs or unbalanced door could result in an open door falling rapidly and/or unexpectedly.
- NEVER use the manual release unless garage doorway is clear of persons and obstructions.

DO NOT USE THE RED HANDLE TO OPEN AND CLOSE THE DOOR.

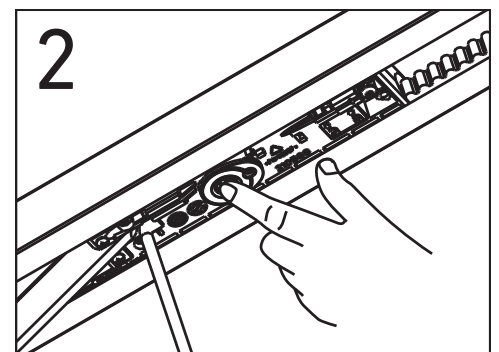
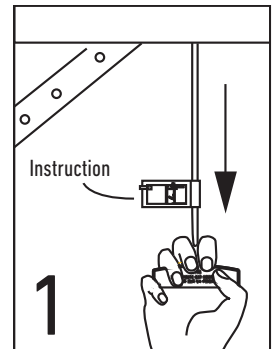
The manual release mechanism enables the door to be manually operated during power outages or in an emergency.

The RED manual release cord is preassembled to the trolley. When the opener is installed the handle should be no higher than 1.8 metres from the floor. The cord may need to be extended.

TO OPERATE THE MANUAL RELEASE:

- 1. Disengage:** Pull the manual release cord and handle down once to disconnect. This will disengage the trolley, allowing the door to be moved by hand, UP and DOWN as many times as needed.
- 2. Re-engage:** Press the "GREEN" button in the centre of the trolley assembly. This will re-engage the trolley.

Operate the door by pressing the transmitter, wall button or button on the opener. This will activate the motor and engage the door when it passes the trolley's position.



Older compatible models:

PowerAce (MT60EVO), TiltMaster (MT100EVO),
Commander MyQ (MT110MYQ) & Cyclone Pro (MT120EVO)

Contact:

Australia: gomerlin.com.au • 1800 638 234
New Zealand: gomerlin.co.nz • 0800 653 667