

# Gliderol garage doors

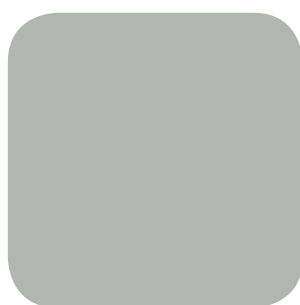


## Colour Selection Chart

Colours to suit all Gliderol Roller Doors and Standard Sectional Doors



**Surfmist®**



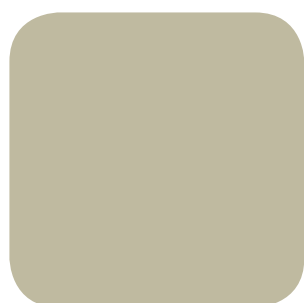
**Shale Grey™**



**Classic Cream™**



**Paperbark®**



**Evening Haze®**



**Cove™**



**Dune®**



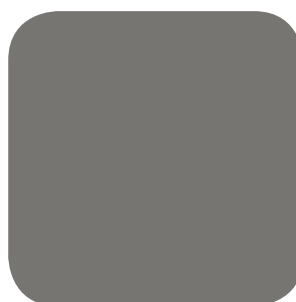
**Windspray®**



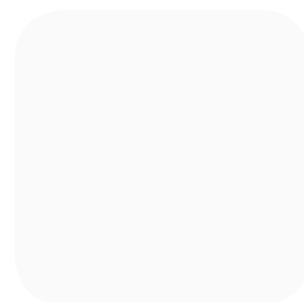
**Gully™**



**Jasper®**



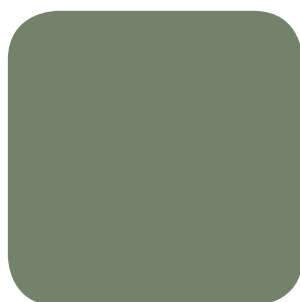
**Wallaby™**



**Dover White**



**Basalt™**



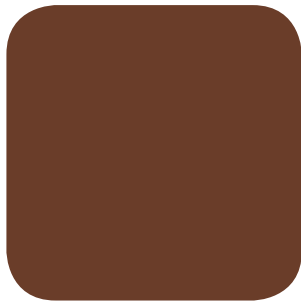
**Pale Eucalypt®**



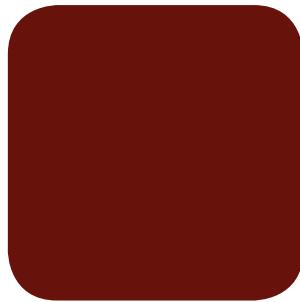
**Mangrove™**

# Colour Selection Chart

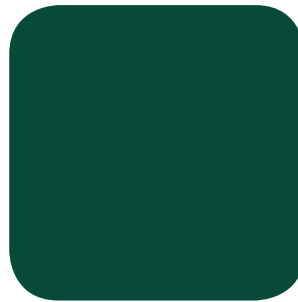
## Colours to suit all Gliderol Roller Doors and Standard Sectional Doors (continued)



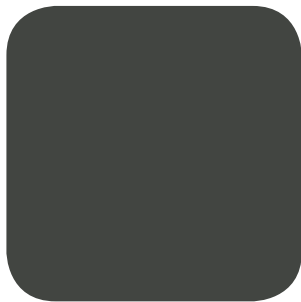
**Terrain™**



**Manor Red®**



**Cottage Green®**



**Woodland Grey®**



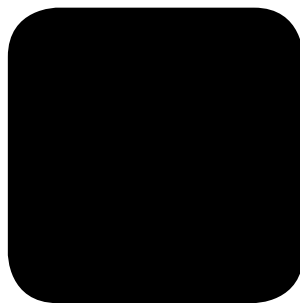
**Deep Ocean®**



**Ironstone®**



**Monument®**



**Night Sky®**

Gliderol has been manufacturing, supplying and installing garage doors in Australia since 1975.

Gliderol produces a comprehensive range of doors including: roller doors, sectional overhead doors, aluminium and timber doors, commercial doors, roller shutters and fire rated shutters.

A wide range of operators are available to complement your door. Providing security and convenience, our range includes safety features and options to ensure your operator suits your needs whether it be residential or commercial.

Please refer to our product brochures or website to discover our range of doors and styles that have been created to suit traditional and contemporary designs.

For assistance with your colour selection or any of the Gliderol range of products you can contact us on:

**1300 799 144**

or visit our website:

**[www.gliderol.com.au](http://www.gliderol.com.au)**

## Premium colours to suit Gliderol Sectional Doors only

Golden Oak is not a Colorbond® colour



**Classic Cedar®**



**Caoba®**



**Golden Oak**

Insul•Glide™ only available in Surfmist®, Paperbark® & Golden Oak.

Optional wet spray colours are available upon request.

### Colorbond®

The COLORBOND® steel colours shown here have been reproduced to represent actual product colours as accurately as possible. However, we recommend checking your chosen colour against an actual sample of the product before purchasing as varying light conditions and limitations of the printing process may affect colour tones. COLORBOND®, Bluescope and ® colour names are registered trade marks of Bluescope Steel Limited. ™ colour names are trade marks of Bluescope Steel Limited. COLORBOND®, BlueScope and ® colour names are registered trade marks and ™ colour names are trade marks of BlueScope Steel Limited.

For more information visit  
**[www.gliderol.com.au](http://www.gliderol.com.au)** or contact  
your local branch on **1300 799 144**

A division of:  **GWA**  
Door & Access Systems

